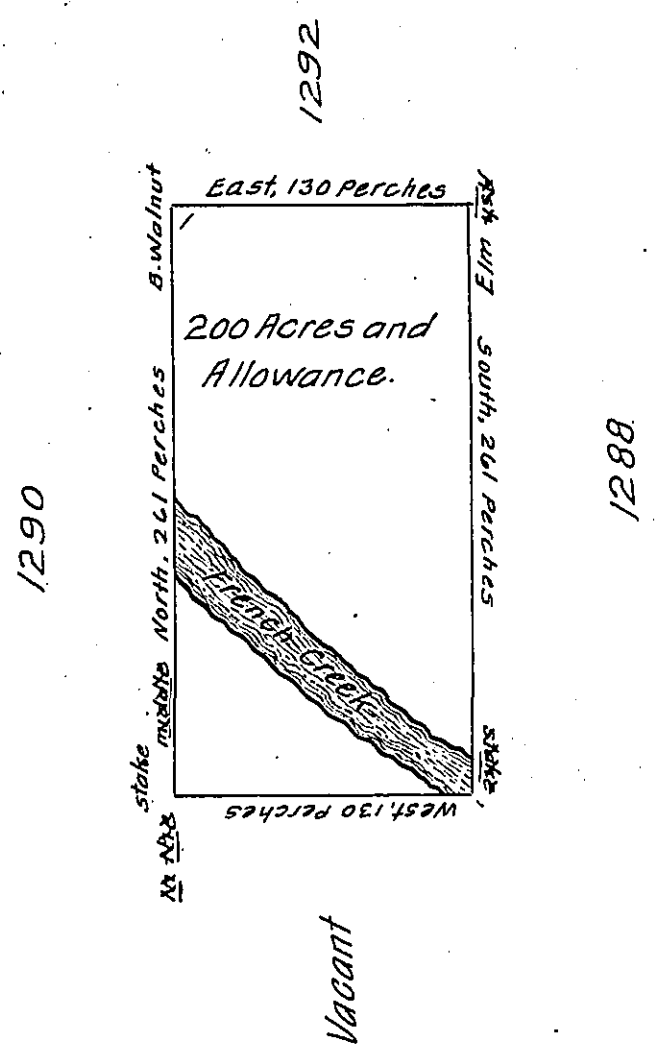


Donation-Land, in District N<sup>o</sup> 6

Lot, N<sup>o</sup> MCCLXXXIX



In Pursuance of an Act of General Assembly of the State of Pennsylvania, passed the twenty fourth Day of February 1785, intituled, 'An Act for directing the Mode of distributing the Donation-Lands promised to the Troops by this Commonwealth; and by Order of the Surveyor General, with the Approbation of the Honourable the Executive Council, I have surveyed, on the Thirtieth Day of November 1785, the above described Tract of Two hundred Acres of Land, and Allowance of Six per Cent for Roads, &c. N<sup>o</sup> 1289, situate in District N<sup>o</sup> 6, on the West Side of the Allegheny River, in the County of Westmoreland,

John Lukens, Esq.  
Surveyor General.

Ja. Chrystie, Deputy  
Surveyor

IN TESTIMONY that the above is a copy of the original remaining on file in the Department of Internal Affairs of Pennsylvania, made conformably to an Act of Assembly approved the 16th day of February, 1833, I have hereunto set my Hand and caused the Seal of said Department to be affixed at Harrisburg, this twenty second day of May 1908.

*Henry Hoover*  
Secretary of Internal Affairs.